

SKU CODES DENOTED IN RED FOR ORDER EFFICIENCY

INSET 1

LOCK MALE END FEMALE END

SMARTLOCK[®] PLUS BUCKLE
SLPB

SHORTER BUCKLE SLOT IS USED TO ATTACH BUCKLE TO AP16 (OUTLINED IN RED). LONGER SLOT FACES OUT.

AP16[®] TUCKED IN NO WRINKLE LINER
AP NWL-20 FOR BOTH 1" & 3/8" THICKNESSES

AP16[®] CUSHION INSERT
AP FI 1 = 1" THICKNESS
AP FI58 = 3/8" THICKNESS

SMARTLOCK[®] PLUS BUCKLE
 SEE INSET 1

AP16[®] HOOK 'N LOOP

AP16[®] WIDER STRAP
AP ST-20

NEW WIDER STRAP* FOR AP16 2020 FRAMES
 *Wider straps WILL NOT fit AP16 kneepads that use a 1" strap. Please note, we will continue to offer the **AP ST 1"** AP16 straps to work with the AP16 frames bought prior to late fall 2020. (SEE INSET 2)

AP16[®] FRAME

AP16[®] RUBBER BOOT
AP RB

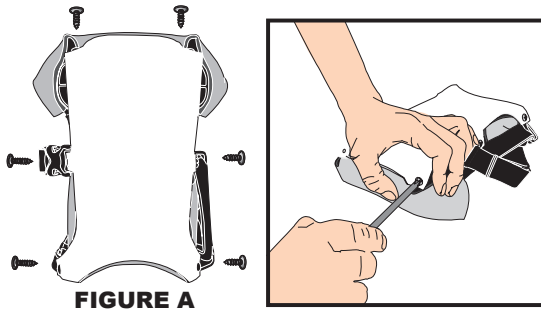
INSET 2

AP16[®] 1" STRAP
AP ST
 FOR AP16 FRAMES BOUGHT PRIOR TO LATE FALL 2020

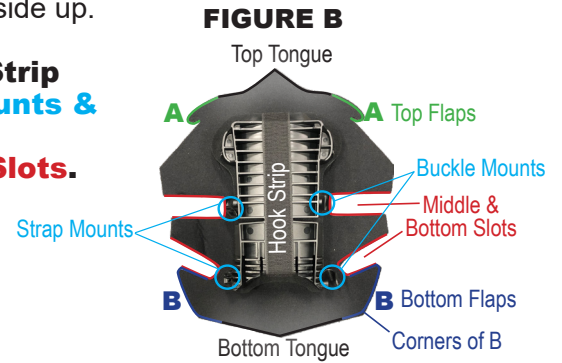
PRO KNEE® AP16®

REPLACING TUCKED IN NO WRINKLE LINER

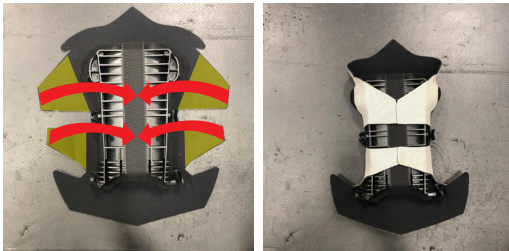
1 Remove Rubber Boot by unscrewing the 6 screws shown in Figure A. Remove old liner.



2 Lay new liner down black side up. Center frame as **FIGURE B** (Cushion side down/ **Hook Strip** side up) so that **Buckle Mounts & Strap Mounts** align with **Middle Slots & Bottom Slots**.



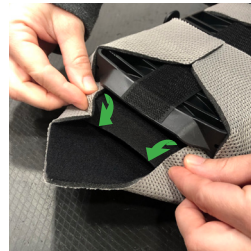
3 Attach the **4 flaps** of liner to the **Hook Strip** at the center of the frame. Tuck liner underneath straps (if needed).



4a Tuck **Top Flaps A** between top of frame & Cushion Insert.



4b Push liner down over width of Cushion Insert.



4c Tightly fold **Top Tongue** of liner to the top of **Hook Strip** at the center of the frame.



5a Tuck **Bottom Flaps B** between bottom of frame & Cushion Insert.



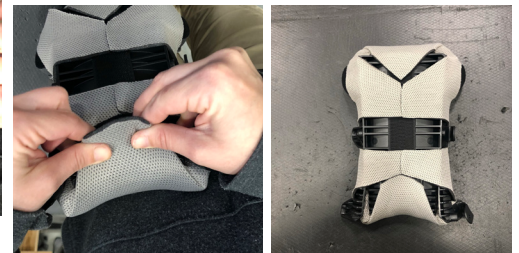
5b Position **Corners of B** with edge of Cushion Insert (frame-side).



5c Push liner down over width of Cushion Insert.



5d Tightly fold **Bottom Tongue** of liner to the bottom of **Hook Strip** at the center of the frame.



6 Reattach Rubber Boot with screws.

