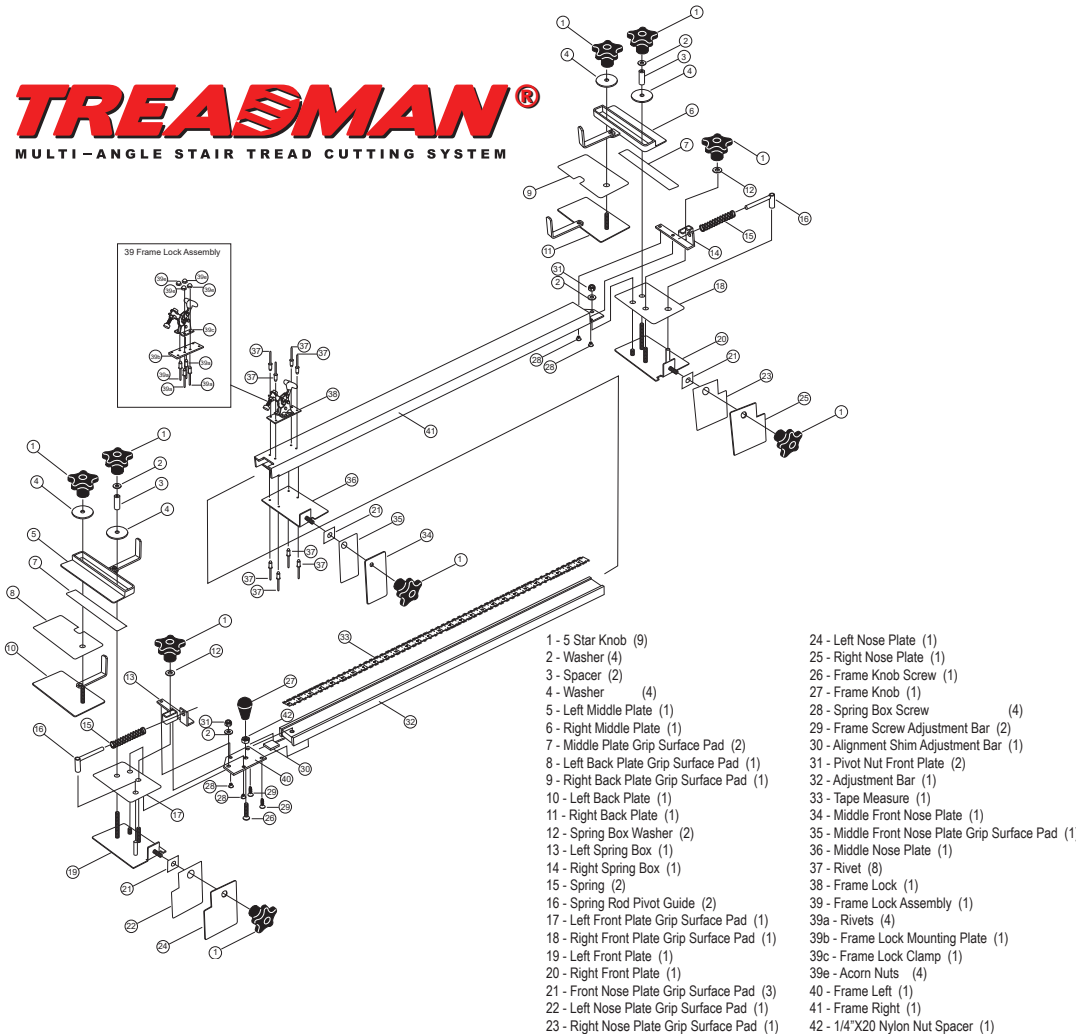


PRO KNEE®

TREADMAN MULTI-ANGLE STAIR TREAD CUTTING SYSTEM



THE SPECS:

- Wall plates adjust to step depths from 10" to 13 1/4"
- Standard unit adjusts for step widths of 35 1/4" to 61 1/2"
- Extension kit 3 adjusts for step widths of 22 1/2" to 36"
- Extension kit 2 adjusts for step widths of 6' 10 3/8" to 9' 1/2"
- Extension kit 1 adjusts for step widths of 4' 8 7/8" to 6' 11"
- 1 piece Step/Riser Template Kit captures riser heights from 6" to 8"
- Rubber stairtread thickness gage automatically adjusts from 1/32" to 1/4"
- Standard unit weighs 6 1/2 lbs.
- Adjustment bar sub-assemblies made from self-lubricating, high density polyethylene
- 1/16" thick steel marking/cutting guide plates with 1/4 / 20 welded steel threaded studs
- 1st plane left and right adjustment plates use factory preloaded spring assemblies
- Sand finish powder coating on all metal sub-assemblies
- Main frame assembly constructed from 1" x 2" x 1/8" aluminum tubing
- Fully adjustable nose plates capture angles from 82° inward to unlimited on vertical nose plane
- Fully adjustable wall plates capture 76° inward to 96° outward on horizontal step plane
- Plate adjustment knob heights differentiation of 3/8"
- Tool Box dimensions closed 13 1/2" x 38 3/4" x 6 1/2"
- Maximum cutting surface of 13 1/2" x 6' 3 3/4" with a 1 7/8" vertical surface for cutting nosings
- Tool Box constructed from blade friendly high density polyethylene
- Weight of Tool Box without tool is 23 lbs.

STEP DOWN RISER PLATE KIT

Sold separately

